

Key and Storage Management System



LoxTop-IQ series

IQCabinet-100 - Black edition



IQCabinet-50 - White edition

About us

The aim of **LOXTOP** companies is to provide key management, key tracking, key security systems and different **RFID** based intelligent storage systems provide highly innovative quality products with high end services on the electronic security and safety equipment market. Our Quality Management System ensures to fulfill the customers' expectations from all over the world.

Management principles

- We strive to provide customized top services for our customers
- Effective management of development projects
- Accurate identification and control of our processes to ensure proper quality during the production and support
- Effective communication with our partners
- Long-term technical support for our partners
- Precise definition of the duties and tasks of our employees
- All aspects of business requirements should be confirmed

We have developed and maintain an effective organization structure, which has been made stable by reliable and professional staff in the management and technician positions.

The **LOXTOP** companies are committed to the efficient operation of their management systems, to satisfy the needs of their clients regarding the key and locker management products, to ensure the quality of production, support and service, and provide effective communication with the partners.

Production

We use the latest microelectronic devices, equipments and developments therefore we aim to deliver highly reliable key and locker management systems to our customers.

The hardware and software for the key management systems are fully developed at our company, which ensures us to meet costumers' specific individual needs and expectations, therefore we can offer full flexibility for our customers.

The testing of the products takes place in our factory. The technical solutions and the software are under continuous development.



Warranty

The **LOXTOP** companies provides 2 years warranty for the sold and delivered Key and Locker Management products. During the warranty period we provide free of charge software upgrades for our customers.

Long term hardware and software support and spare parts supplies are available for our products.

Support

We have a dedicated support team which ensures a worldwide 7/24 hours service for our customers and distributors.

Our software solution ensures the possibility of the remote maintenance, service and also the upgrades of the software.

Our customers and distributors have a free access to our web-support system.

Contact

LoxTop Ltd.

14. Almáskerti Ipari Park
Békéscsaba,
5600 Hungary

Customer Service: +36 (30) 907 1252
+36 (30) 501 9055

Head office: +36 (66) 520 981
E-mail: sales@loxtop.com

Web: www.loxtop.com

Contact Switzerland

evex AG
Bruggacherstrasse 26
8117 Fällanden-CH
Head office: +41 3434000
Web: www.evex.ch

Key and Storage Management System

Why key management is needed?

- Keys should be stored in a safe place and used by authorized person
- Control keys and users
- Record key usages
- Key inventory
- Up-to-date information about keys

What an intelligent key management system can do for you?

- You know exactly who is using the keys
- Define rights for users add/remove users, cards and keys
- Users will access the keys only with permission
- View reports and log
- Safe storage
- Manage keys in several buildings from a central office

Advantages

- Real-time transactions
- Control access to cabinets and to all keys and boxes
- Convenient accessibility
- Combine key positions and value boxes within one system
- The capacity of cabinets can grow together with your needs
- Accountability and responsibility – reporting user and key activity.
- On the screen of the cabinet appears which keys are in and who has the key if it is taken
- Access is fully monitored
- Helps reducing costs – less lost keys lead to higher security
- Improves efficiency

“Do you know who took which keys and when?”



Manage items

- Gain access not only to keys but also to different assets
- You can put several belongings into the boxes: tools, mobile phones, ID cards, documents, etc
- Use your card and code to access both keys and items

Solution

- Managed access control system for keys and items
- Illuminated key positions makes key-finding easier
- Access via a user-friendly touch PIN-pad and card reader
- Return any key to any open key-place and the system will record the new position

Security

- You always know who removed the key and when it was taken or returned
- Define access rights to users individually
- Monitor how often it was accessed and by whom
- Invoke alerts in case of missing key or overdue keys
- Secure storage in steel cabinets or safes
- Keys are secured by seals to RFID tags
- Access to keys with PIN code and/or card

Elements of the system



Product Specifications

System

Cabinet Types

- Thin wall Cabinet
- Key and Box Cabinet
- Storage Cabinet
- Safe

Safe certifications

- SS3492 (Swedish Standard),
- EN 14450 Standard, "S1" qualification

Storage capacity

- Lowest capacity is 1 box or 10 keys
- Highest capacity is 200 boxes or 400 keys

Cabinet doors

- With/without door (right sided, left sided)
- Transparent plastic door
- Full metal door

Computer module

Industrial PC, Intel Atom E3845 1.91 GHz, Built in SSD/HDD and external memory for backup, 4 GB DDR3 RAM, 8.9" Touch screen TFT, 2 Ethernet interfaces, RS232, USB, Windows 10 Embedded operating system.

Technical data

Power Requirement

230V50Hz / 110V60Hz AC

Internal Battery

7Ah, up to 45 min. operation

Consumption

60W

Operating Temperature

0 - 40°C (32°F - 104°F)

Color of the Cabinet

- RAL 9002
- YW361F
- on demand

Security

Card reader

- USB or RS232
- Mifare 13.56 MHz
- EM 125 KHz

Fingerprint reader (optional)

USB or RS232

Key holder

CleverKey (keyholder with RFID-chip)

Operation

Number of keys and boxes which the user is able to pick up or open within one login session

10 keys and/or 10 boxes

Remote management

WEB Interface Available

Network Mode

- Cabinets synchronize data with each other
- Local and Central database

Communication with External Systems

- Interface is available for ERP integration
- Based on XML and WEB service

Emergency open

- Max. 10 keys in one time
- Works using emergency key and button
- Enable emergency from external input

Advantages

- Built in a safe for higher security
- Built up of modules and later expandable
- Easy to install, Plug&Play
- 24/7 support
- Remote support available
- 2 year warranty



Standard models - Cabinets only for storing keys

Model	Storage capacity	Physical dimensions (width x height x depth)	
IQCabinet-50	10 - 50 keys in one frame	782 x 575 x 130 (mm)	30.787 x 22.637 x 5.118 (in)
IQCabinet-100	10 - 100 keys in one frame	782 x 1075 x 130 (mm)	30.787 x 42.322 x 5.118 (in)
IQCabinet-200	20 - 200 keys in two frames	1289 x 1075 x 130 (mm)	50.748 x 42.322 x 5.118 (in)
IQCabinet-300	30 - 300 keys in three frames	1796 x 1075 x 130 (mm)	70.709 x 42.322 x 5.118 (in)
IQCabinet-400	40 - 400 keys in four frames	2303 x 1075 x 130 (mm)	90.669 x 42.322 x 5.118 (in)

Standard models - Cabinets for flexible usage, storing keys and items

Model	Storage capacity	Physical dimensions (width x height x depth)	
IQCabinet-50	10 - 50 keys or 1 - 10 boxes in one frame	782 x 561 x 200 (mm)	30.787 x 22.087 x 7.873 (in)
IQCabinet-100	10 - 100 keys or 1 - 20 boxes in one frame	782 x 1075 x 200 (mm)	30.787 x 42.322 x 7.873 (in)
IQCabinet-200	20 - 200 keys or 2 - 40 boxes in two frames	1289 x 1075 x 200 (mm)	50.748 x 42.322 x 7.873 (in)
IQCabinet-300	30 - 300 keys or 3 - 60 boxes in three frames	1796 x 1075 x 200 (mm)	70.709 x 42.322 x 7.873 (in)
IQCabinet-400	40 - 400 keys or 4 - 40 boxes in four frames	2303 x 1075 x 200 (mm)	90.669 x 42.322 x 7.873 (in)



IQCabinet-400
with only keys

IQCabinet-10
(DEMO)
with box
and keys

IQCabinet-100
with boxes and keys

LoxTop - IQStorageCabinet Series



Standard models

Model	Storage capacity	Physical dimensions (width x height x depth)	
IQ Storage Cabinet – 10	2 - 10 standard boxes in one block	782 x 1075 x 200 (mm)	30.787 x 42.322 x 7.874 (in)
IQ Storage Cabinet – 20	2 - 20 standard boxes in one block	782 x 1075 x 200 (mm)	30.787 x 42.322 x 7.874 (in)
IQ Storage Cabinet – 30	4 - 30 standard boxes in two blocks	1342 x 1075 x 200 (mm)	52.834 x 42.322 x 7.874 (in)
IQ Storage Cabinet – 40	4 - 40 standard boxes in two blocks	1342 x 1075 x 200 (mm)	52.834 x 42.322 x 7.874 (in)
IQ Storage Cabinet – 50	6 - 50 standard boxes in three blocks	1902 x 1075 x 200 (mm)	74.881 x 42.322 x 7.874 (in)
IQ Storage Cabinet – 100	6 - 100 standard boxes in five blocks	2975 x 1075 x 200 (mm)	117.125 x 42.322 x 7.874 (in)
IQ Storage Cabinet – 144	6 - 144 expanded boxes in six blocks	3040 x 2170 x 340 (mm)	118.685 x 85.433 x 13.386 (in)

Special models

The followings can be built-in a box:

Inside lamp, USB charger, measuring tray, RFID identification, plastic window, inside key, inside box



Standard models

Model	Storage capacity	Physical dimensions (width x height x depth)	
IQSafe-40	40 keys (in cabinet)	420 x 750 x 200 (mm)	16.535 x 29.528 x 7.874 (in)
IQSafe-160	50 keys in the door and 110 keys or 22 boxes in the cabinet	550 x 1500 x 400 (mm)	21.654 x 59.055 x 15.748 (in)
IQSafe-300FP	180 keys and 120 keys or 24 boxes in the cabinet	800 x 1800 x 800 (mm)	31.496 x 70.866 x 31.496 (in)
IQSafe-400	70 keys in the door and 330 keys in the cabinet	700 x 1500 x 650 (mm)	27.559 x 59.055 x 25.591 (in)



Face Recognition

New generation face recognition module. Integrated multiplex biometric module. The LoxTop Key and Asset Management Systems can be optionally equipped with a new generation multiplex face recognition module. The biometric identification results in a more secure access.

Alcotest

LoxTop systems can come with an Alcotest, which can protect in an easy way against the consequences of employees using the company equipment under the influence of alcohol. It can be sufficient for big number of cars in a company.



LoxTop - Modules

Blank panel types

Model	Physical dimensions (WxHxD)
BlankPanel-10	470 x 100 x 8 (mm)

Covers the unused module places

Key module types

Model	Capacity	Physical dimensions (WxHxD)
IQStaggered-KeyModule-5	5 keys	470 x 100 x 63 (mm)
IQKeyModule-10	10 keys	470 x 100 x 63 (mm)

Storage of keys

Standard Box module types

Model	Height	Boxes	Outside dimensions (WxHxD)	Inside dimensions (WxHxD)
IQBoxModule-1u1d	1 unit	1 box	470 x 100 x min.127 (mm)	376 x 79 x min.125 (mm)
IQBoxModule-1u2d	1 unit	2 boxes	470 x 100 x min.127 (mm)	160 x 79 x min.125 (mm)
IQBoxModule-2u1d	2 unit	1 box	470 x 200 x min.127 (mm)	376 x 179 x min.125 (mm)
IQBoxModule-2u2d	2 unit	2 boxes	470 x 200 x min.127 (mm)	186 x 179 x min.125 (mm)
IQBoxModule-3u1d	3 unit	1 box	470 x 300 x min.127 (mm)	376 x 279 x min.125 (mm)
IQBoxModule-3u2d	3 unit	2 boxes	470 x 300 x min.127 (mm)	186 x 279 x min.125 (mm)
IQBoxModule-4u1d	4 unit	1 box	470 x 400 x min.127 (mm)	376 x 379 x min.125 (mm)
IQBoxModule-4u2d	4 unit	2 boxes	470 x 400 x min.127 (mm)	186 x 379 x min.125 (mm)



LoxTop - Modules



IQKeyModule-10
1 unit height KeyModule with 10 keyplaces



IQBoxModule-2u2d
2 unit height BoxModule with 2 boxes



IQ Staggered KeyModule-5
1 unit height Staggered KeyModule with 5 keyplaces



IQBoxModule-1u2d
1 unit height BoxModule with 2 boxes - inside key



IQ Mini BoxModule-10
1 unit height Mini BoxModule with 10 external compartments



IQBoxModule-1u2d
1 unit height BoxModule with 2 boxes - measuring tray



IQBoxModule-1u2d
1 unit height BoxModule with 2 boxes



IQBoxModule-1u2d
1 unit height BoxModule with 2 boxes - inside identification of items



IQBoxModule-1u1d
1 unit height BoxModule with 1 box



IQBoxModule-1u1d
1 unit height BoxModule with 1 box - inside box

LoxTop - Rifle Storage Cabinet

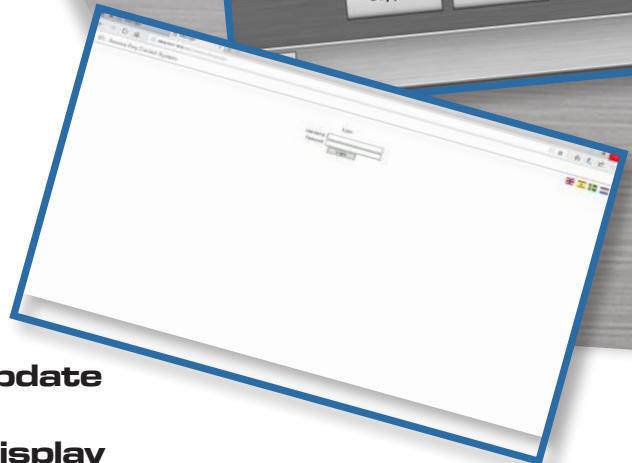
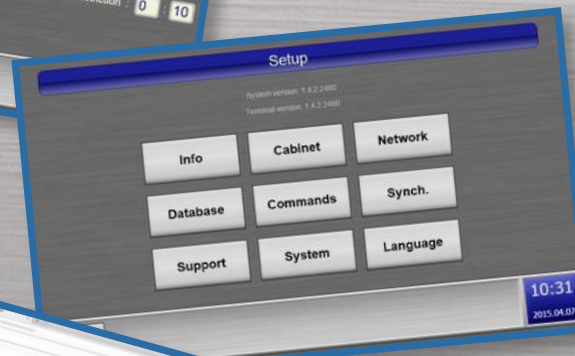
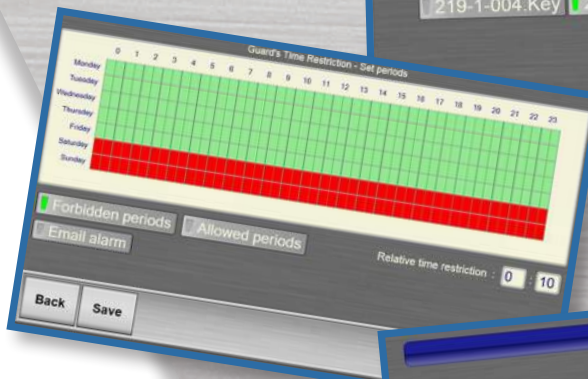
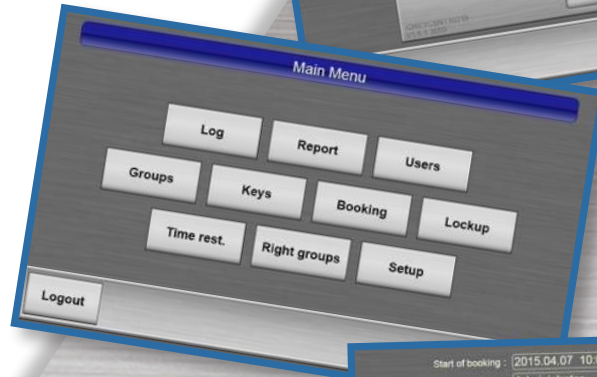
As violence and terrorism is becoming to be a daily presence it is ever more important to store the guns in a system which can securely hold the firearms and only lets authorized officers to take them. As a solution we would like to introduce to you the LoxTop Rifle Storage Cabinet, which has built in pressure sensors. This way the system recognizes whether the weapon is in its place or taken out.

The touch terminal provides an effective audit trail of events. Optionally lockers with or without weight measuring function can be purchased to store ammunition/magazine. Each LoxTop Rifle Storage Cabinet can store minimum 2 and maximum 40 rifles.



Software functions:

- **Booking**
- **Time restriction**
- **Maximum login counter**
- **Customizable user profile expiration date**
- **Different access levels**
- **Email notification for missing keys**
- **Remote help**
- **Remote management using WEB browser**
- **Database synchronization between cabinets**
- **Detailed event log**
- **Event log of all changes made by the administrator**
- **Value storage function**
- **Lockup possibility for keys and boxes**
- **Automatic database backup**
- **Many language choices for users**
- **Worktime reports**
- **Unique identification of people**
- **Possibility for automatic software update**
- **Personalized customer logo on the display**





LoxTopTM
intelligent key storage systems

**Different configurations
of IQ Key and Storage
Management System**

References

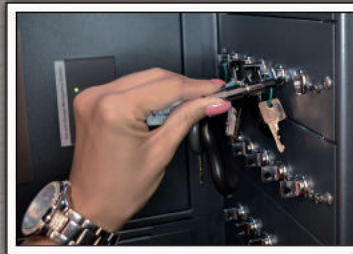




Card reader



Touch-screen



CleverKey
Keyholder with RFID-chip



Phone and card storage
Small scale storage



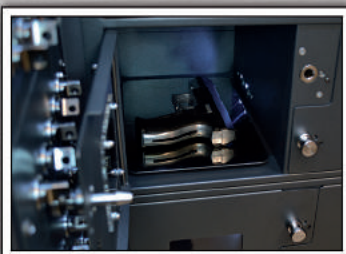
External key and card holder box



Face recognition



AlcoTest



Handgun storage
Storage with built in
measuring tray



Tablet and phone storage
Medium scale storage with
USB charger



Notebook storage



Handbag storage